

STEERING COLUMNS TYPE KK...



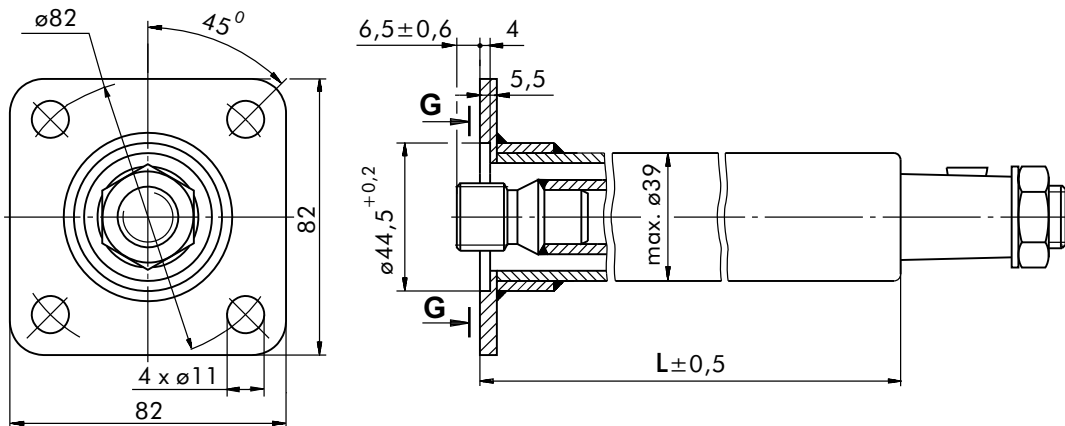
The M+S Hydraulic KK Steering Columns transfer the torque from the steering wheel of the vehicle to the HKU, HKUS or other of the same class steering units. The KK steering columns are consisted of a pipe in which is centered the control shaft.

Permissible loads on the steering column are as follows:
 Max. torque applied to the steering wheel 24 daNm
 Max. bending moment 20 daNm
 Max. axial load 100 daN

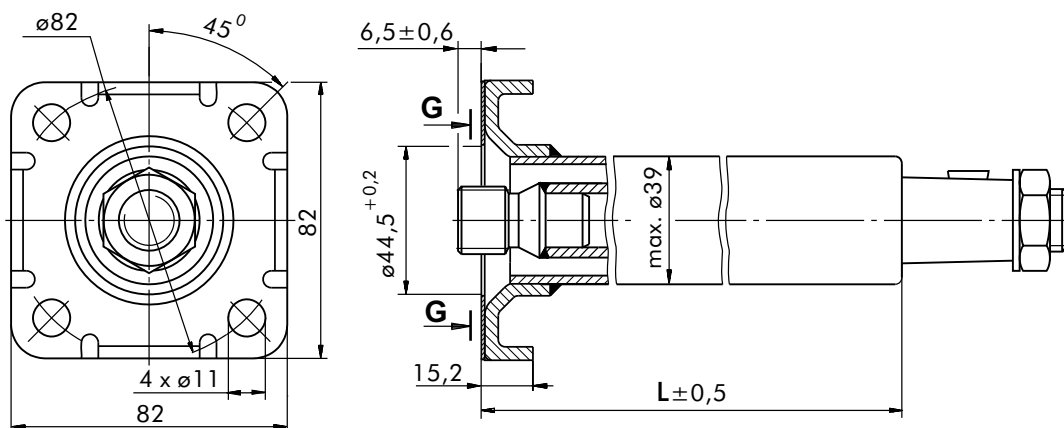
The steering column must be additionally supported when the length L exceeds 150 mm.

DIMENSIONS AND MOUNTING DATA

Type KK



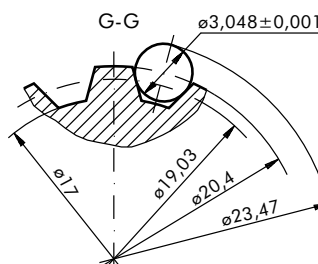
Type KKF



SPECIFICATION DATA

Parameters	Type			
	KK 75	KK 150	KK 390	KK 750
L, [mm]	78	168,2	393	777,8
Weight, [kg]	0,75	1,1	1,9	3,3

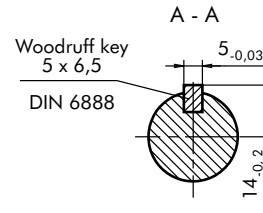
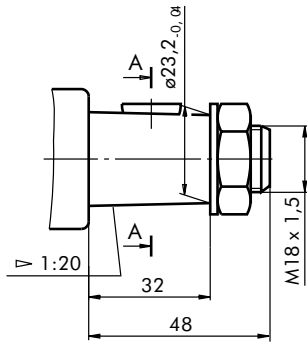
Please, contact factory or your regional manager regarding other lengths.



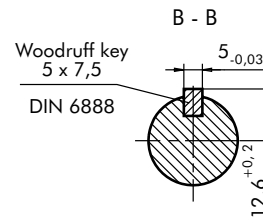
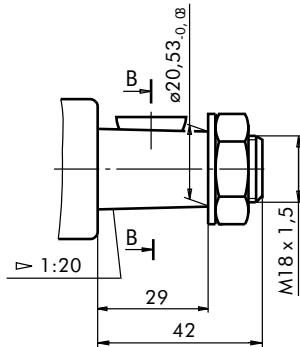
Involute Spline Data		
Modul	m	1,5875
Number of Teeth	z	12
Pressure Angle	α	30°
Pitch	p_t	4,986

SHAFT EXTENSIONS

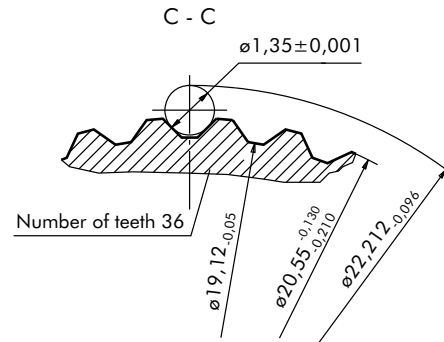
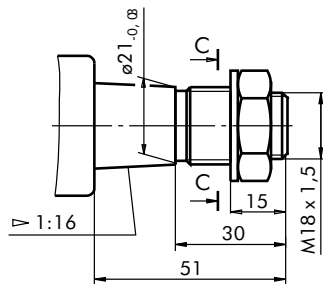
TYPE I



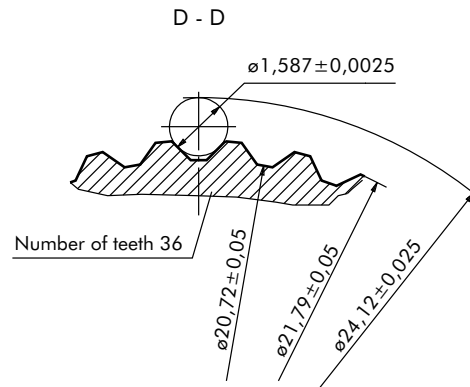
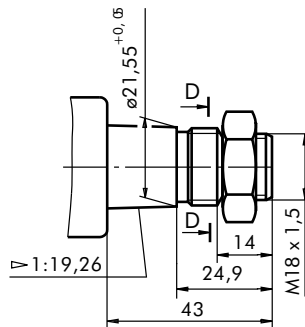
TYPE II



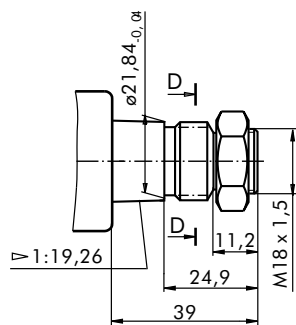
TYPE III



TYPE IV

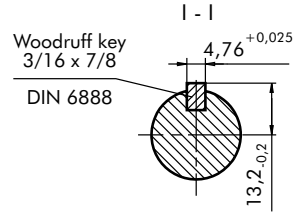
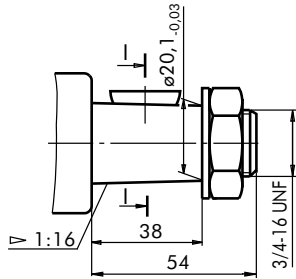


TYPE V

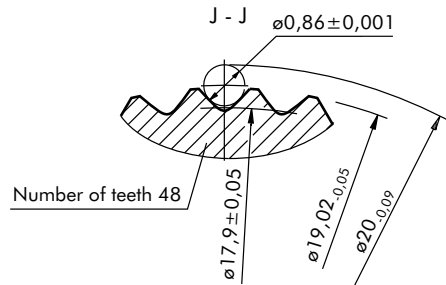
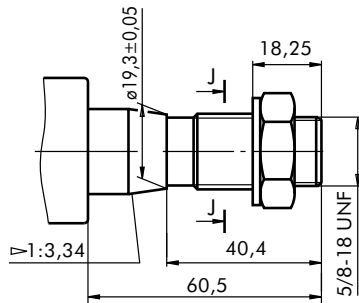


SHAFT EXTENSIONS

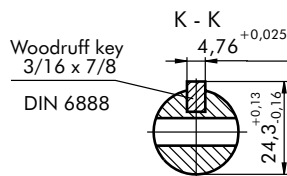
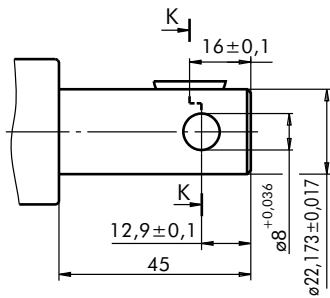
TYPE VI



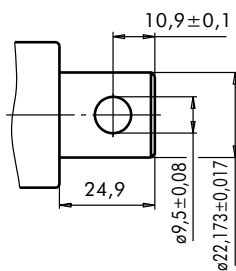
TYPE VII



TYPE VIII

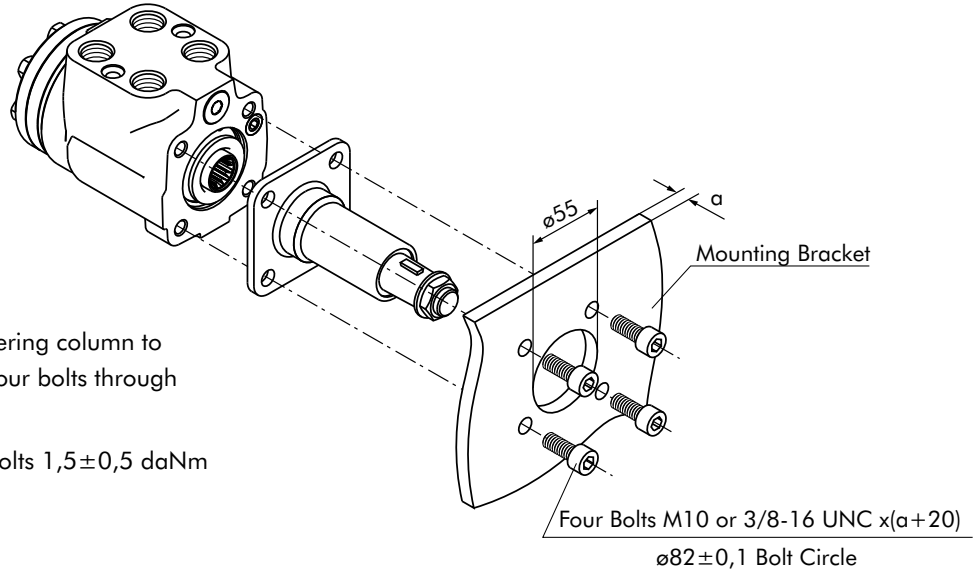


TYPE IX

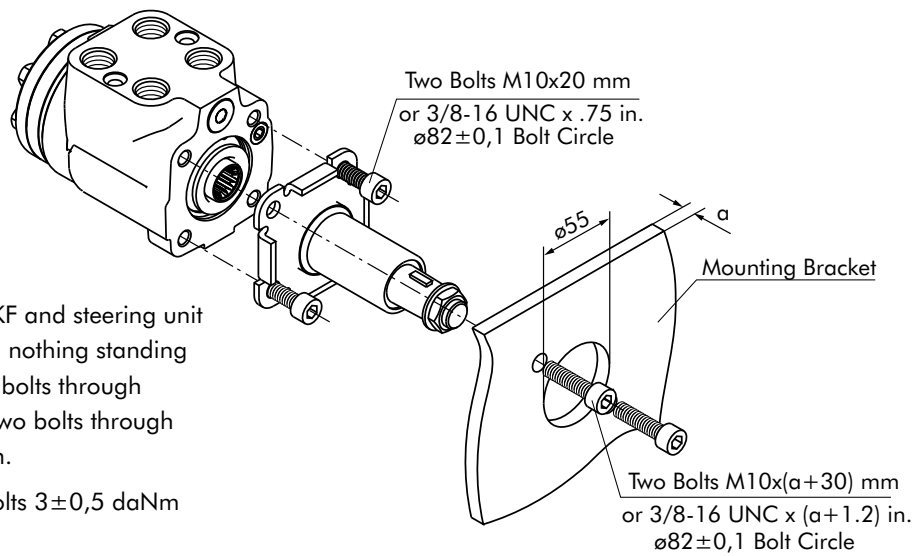


INSTALLING

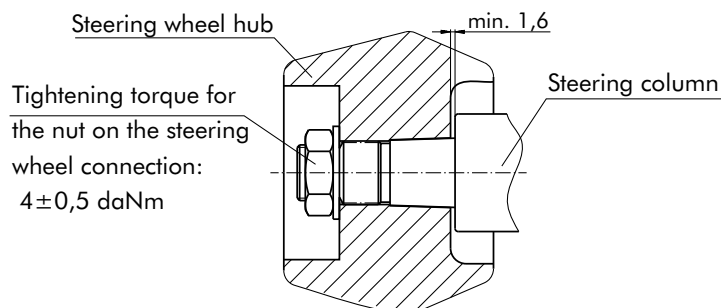
For column type KK



For column type KKF

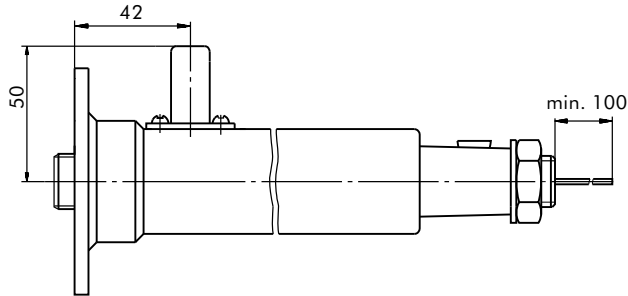


Minimum Clearance at Assembly

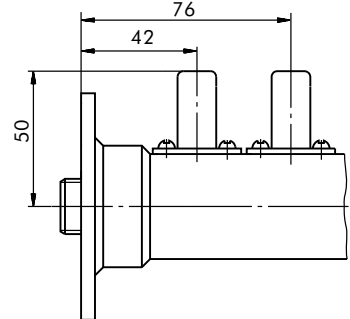


SOUND SIGNAL CONNECTION

E Option



EE Option



ORDER CODE

	1	2	3	4	5	6
KK						

Pos.1 - Mounting Flange

omit - Flange without Tabs

F - Flange with Tabs

Pos.2 - Length, mm (acc. to table)

Pos.3 - Shaft Extensions

I, II, III, IV, V, VI, VII, VIII, IX

Pos.5 - Option (Paint)*

omit - No Paint

P - Painted

PC - Corrosion Protected Paint

Pos.6 - Design Series

omit - Factory specified

Pos.4 - Signal Connection (Option)

omit - without electric signal connection

E - with one electric signal connection

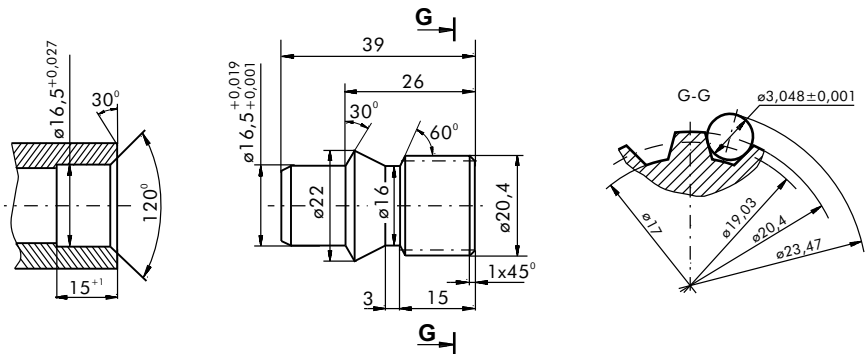
EE - with two electric signal connection

NOTES:

* Colour at customer's request.
The steering columns are yellow galvanized as standard.

Shaft End Part

Order No:46415 001 00



Involute Spline Data		
Modul	m	1,5875
Number of Teeth	z	12
Pressure Angle	α	30°
Pitch	p_t	4,986